

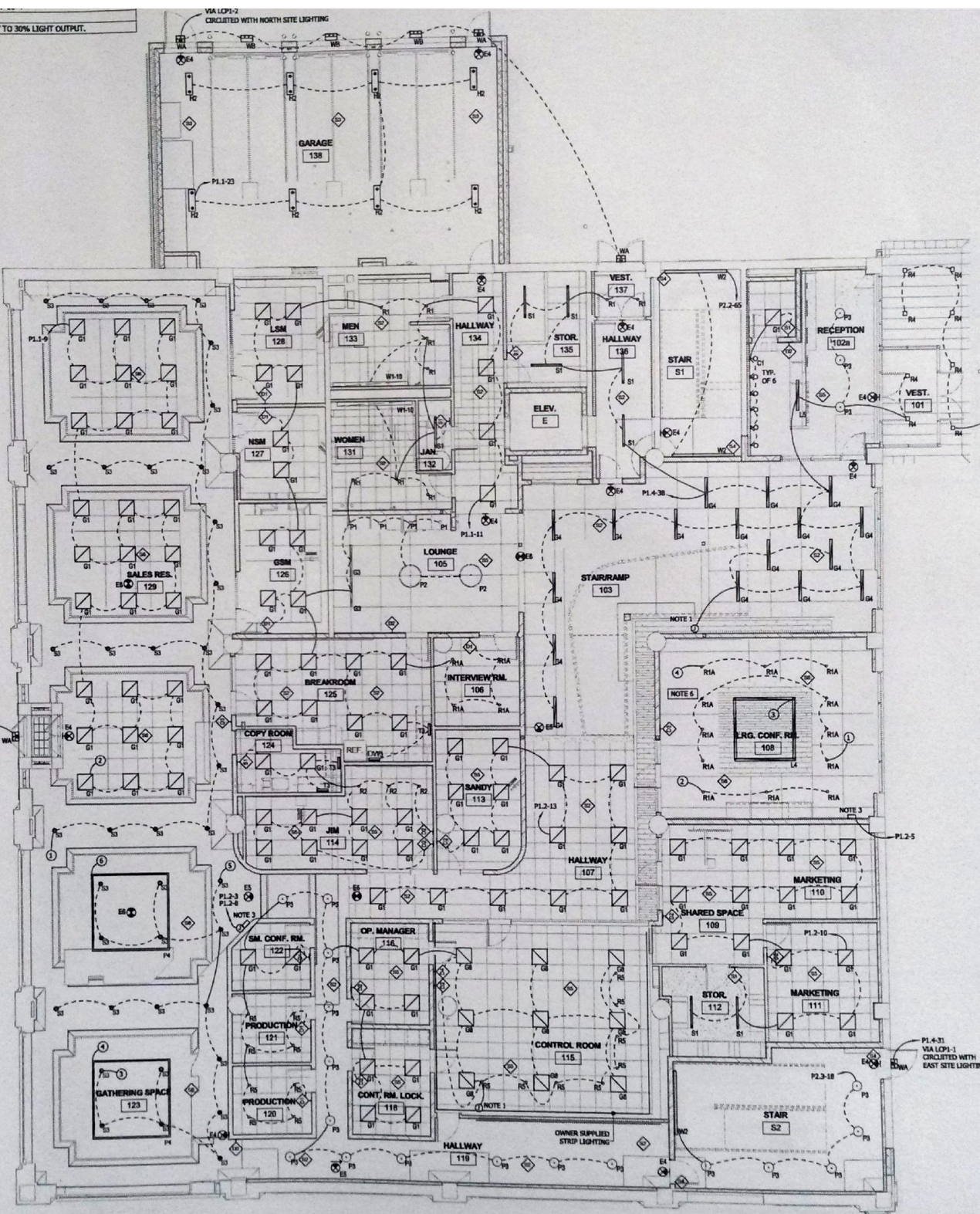
ATOR SUPPLIER
ON-OCCUPIED TIMES SHALL BE SET TO 30% LIGHT OUTPUT.

VIA LCP1-2
CIRCULATED WITH NORTH SITE LIGHTING

P1.4-31
VIA LCP1-1
CIRCULATED WITH
EAST SITE LIGHTING

P1.4-32
VIA LCP1-2
CIRCULATED WITH
NORTH SITE LIGHTING

P1.4-31
VIA LCP1-1
CIRCULATED WITH
EAST SITE LIGHTING



1 FIRST FLOOR LIGHTING PLAN
1/8" = 1'-0"